

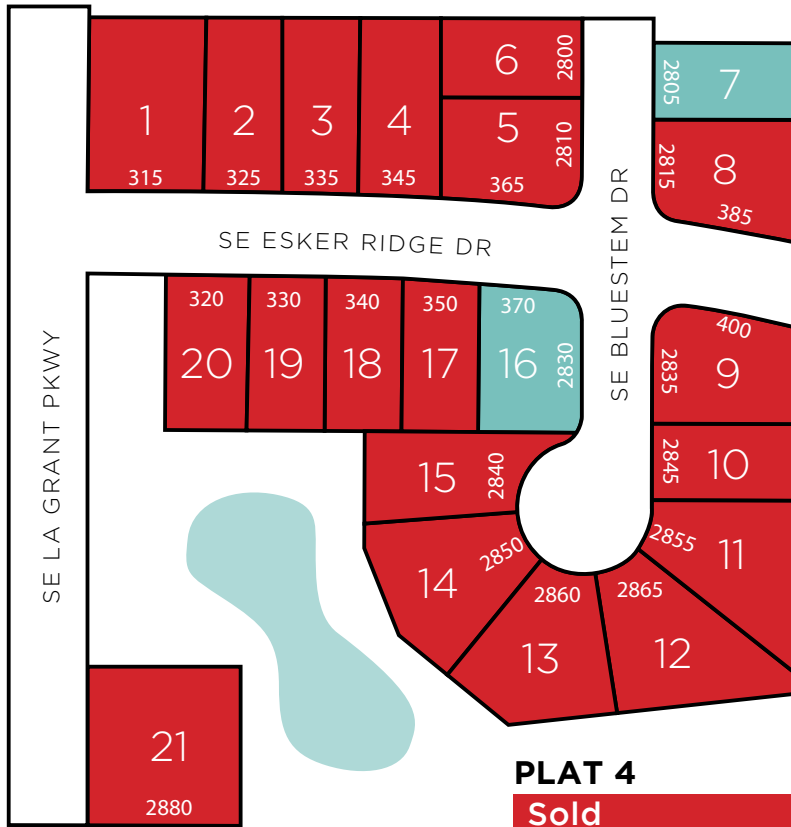


KETTLESTONE RIDGE

PLAT 4

WAUKEE

www.jerryshomes.com



PLAT 4

Sold

Spec Home

Available For BTO

School District
Waukee

Nearest Schools
Maple Grove Elementary, South Middle School, Timberline School (grades 8-9), Waukee High School

Nearest Grocery
Fareway, Hy-Vee

Nearest Gym
YMCA of Waukee, Lifetime Fitness

Nearest Shopping Center
Jordan Creek Town Center

Home Improvement Store
Lowe's and Menards

With one of the most affordable and accessible pieces of ground developed in Waukee in the last 5 years, this development will have immediate access to Grand Prairie Parkway via Westtown Parkway. Homes in this area are in the heart of the burgeoning Kettlestone area. Soon to be minutes from shopping, dining and trails! You'll be able to find the perfect location to lay your roots down in one of Waukee's premiere developments, Kettlestone Ridge.

Lot #	Address	Type	Sqft	Price	Style
7	2805 SE Bluestem Dr	Standard	8,129	\$309,765	DUKE EXP
16	370 SE Esker Ridge	DL/WO	10,657	\$335,337	LOLO

Rick Grubb | 515.779.2192 | Rick@theteamdsm.com

Listing information subject to change without notice.



#SINCE1957



Our history builds your future.

Daylight lots are an additional \$4,000 above listing price. Walkout lots are an additional \$7,000 above listing price.