

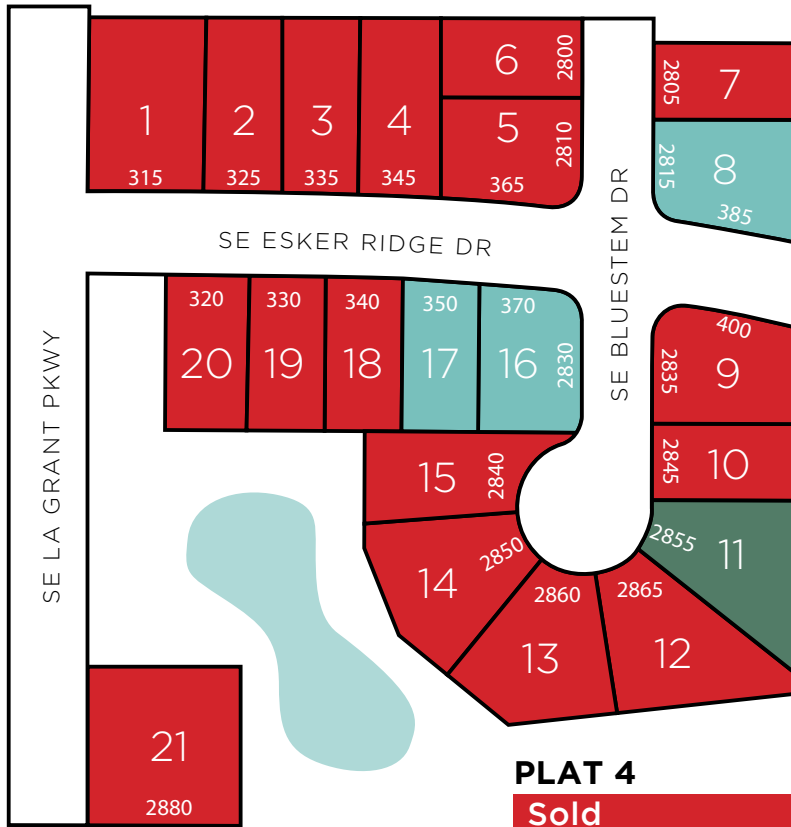


KETTLESTONE RIDGE

PLAT 4

WAUKEE

www.jerryshomes.com



PLAT 4

Sold

Spec Home

Available For BTO

School District
Waukee

Nearest Schools

Maple Grove Elementary, South Middle School, Timberline School (grades 8-9), Waukee High School

Nearest Grocery

Fareway, Hy-Vee

Nearest Gym

YMCA of Waukee, Lifetime Fitness

Nearest Shopping Center

Jordan Creek Town Center

Home Improvement Store

Lowe's and Menards

With one of the most affordable and accessible pieces of ground developed in Waukee in the last 5 years, this development will have immediate access to Grand Prairie Parkway via Westown Parkway. Homes in this area are in the heart of the burgeoning Kettlestone area. Soon to be minutes from shopping, dining and trails! You'll be able to find the perfect location to lay your roots down in one of Waukee's premiere developments, Kettlestone Ridge.

Lot #	Address	Type	Sqft	Price	Style
8	2815 SE Bluestem Dr	Standard	11,596	\$309,536	CASCADE
16	370 SE Esker Ridge	DL/WO	10,657	\$327,337	LOLO
17	350 SE Esker Ridge	Walkout	8,325	\$307,847	COPELAND

Lot #	Address	Type	Sqft	Price
11	2855 Se Bluestem Dr	Standard	12,673	\$76,000

Rick Grubb | 515.779.2192 | Rick@theteamdsm.com

Listing information subject to change without notice.



#SINCE1957



Our history builds your future.

Daylight lots are an additional \$4,000 above listing price. Walkout lots are an additional \$7,000 above listing price.