

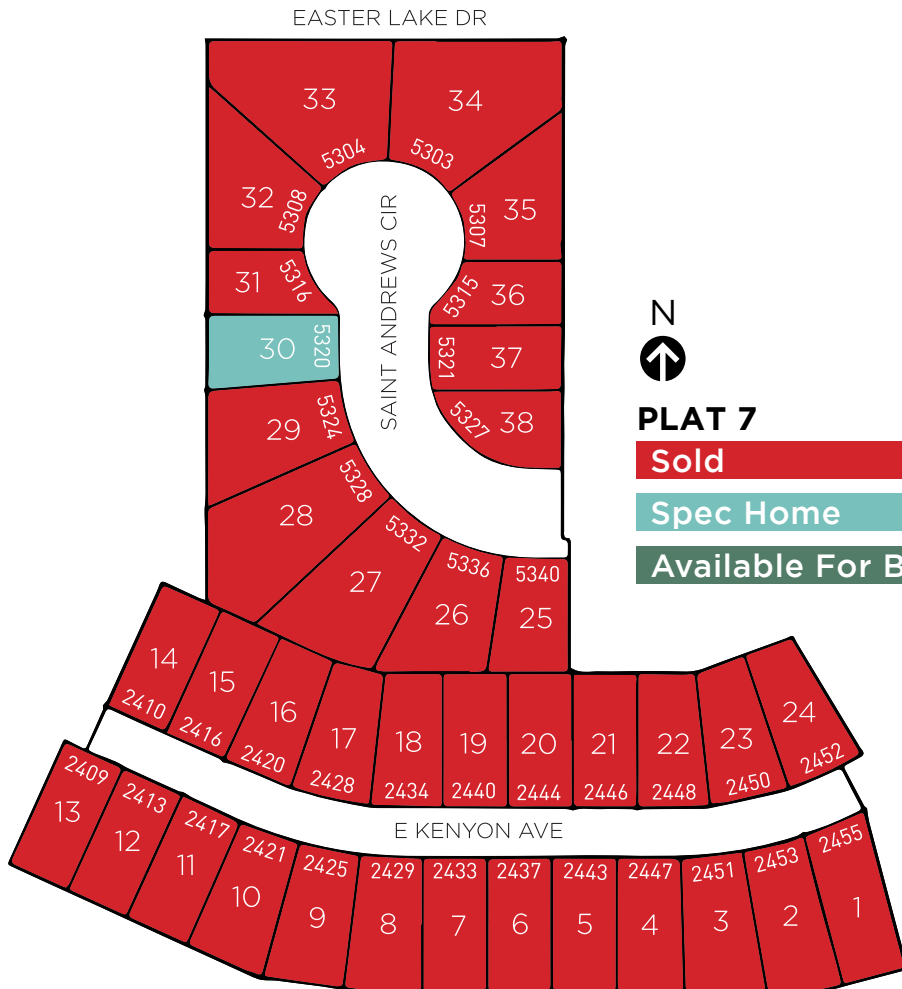


CARMAN ESTATES

DES MOINES

PLAT 7

www.jerryshomes.com



School District
Des Moines Community

Nearest Schools
Jackson Elementary School
McCombs Middle School
Lincoln High School

Nearest Grocery
Walmart Supercenter

Nearest Gym
Aspen Athletic Club

Nearest Shopping Center
Southridge Mal

Home Improvement Store
Farm and City Supply

Quality, affordably priced new homes with a short commute to downtown Des Moines. Six-year tax abatement is offered making Carman Estates very attractive to homebuyers. This area boasts close proximity to shopping, Grays Lake, Easter Lake and Ewing Park.

LOT #	ADDRESS	TYPE	LOT SQFT	PRICE	STYLE
30	5320 SAINT ANDREWS CIR	Walkout	10,645	\$314,139	CEDAR 4BR

John Gentile | 515.771.6407 | John@johngentilerealtor.com

Listing information subject to change without notice.

#SINCE1957



Our history builds your future.

Daylight lots are an additional \$4,000 above listing price. Walkout lots are an additional \$7,000 above listing price.