



JERRY'S HOMES

ANGEL PARK

CLIVE

LOT	ADDRESS	TYPE	SQFT	PRICE	STYLE
5	3662 NW 164TH ST	Standard	12,370	\$397,165	RICHLAND
6	3656 NW 164TH ST	Daylight	13,028	\$433,930	BRIDGEWATER
7	3644 NW 164TH ST	Daylight	12,197	\$433,866	MAYFIELD II
LOT	ADDRESS	TYPE	LOT SQFT	PRICE	
19	3654 NW 166TH ST	Walk-Out	11,670	\$79,000	
20	3648 NW 166TH ST	Standard	11,237	\$78,000	
21	3638 NW 166TH ST	Walk-Out	9,848	\$77,000	
23	3624 NW 166TH ST	Daylight	9,100	\$77,000	
29	3629 NW 166TH ST	Walk-Out	8,750	\$75,000	
30	3633 NW 166TH ST	Walk-Out	8,750	\$75,000	
31	3641 NW 166TH ST	Walk-Out	12,879	\$69,000	
32	3646 NW 165TH ST	Walk-Out	12,879	\$69,000	
33	3634 NW 165TH ST	Daylight	8,750	\$75,000	
34	3626 NW 165TH ST	Daylight	8,750	\$75,000	
35	3618 NW 165TH ST	Standard	11,227	\$75,000	

School District
Waukee

Nearest Schools
Walnut Creek Elementary
Waukee Middle School
Waukee High School

Nearest Grocery
Hy-Vee

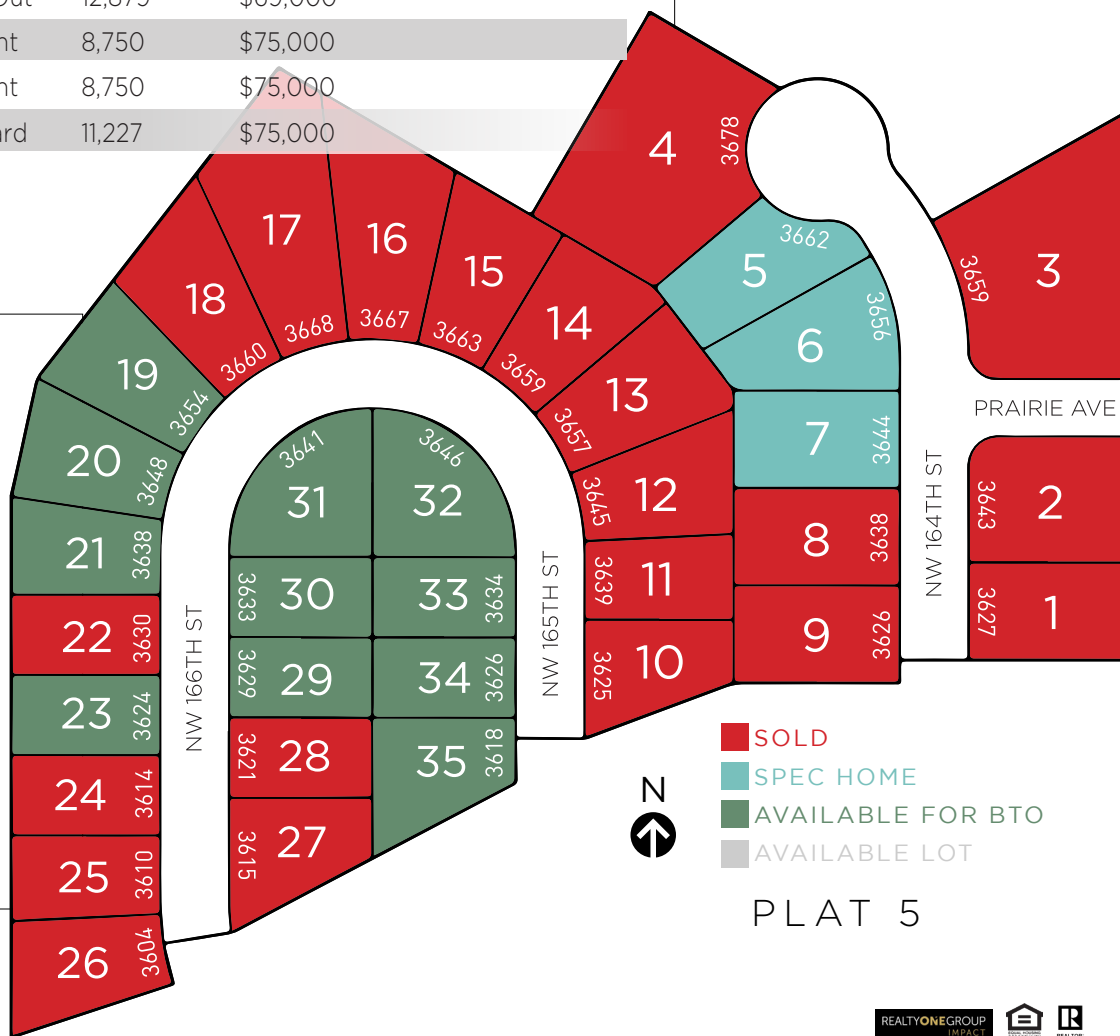
Nearest Gym
Lifetime Fitness or
Spartan Gym (Clive)

Nearest Shopping Center
Jordan Creek Town Center

Nearest Hardware/Home Improvement Store
Menards

Outdoor Amenities
Near Greenbelt Park and trails

A desirable and popular area to live, Angel Park has easy access to Grand Prairie Pkwy interstate exit, a new Hy-Vee grocery store and award-winning Waukee schools. Angel Park is home to the 2018 Home Show, offers great lots and quality homes at an affordable price point in this growing Clive community.



Listing information subject to change without notice. Daylight lots are an additional \$3,000 above listing price. Walkout lots are an additional \$6,000 above listing price.

JOHN GENTILE | 515.771.6407 | JOHN@JOHNGENTILEREALTOR.COM | JERRYSHOMES.COM

JERRYSHOMES.COM

